

JOURNEYMAN



January 2010  
utilityproducts.com

# Utility Products

The Resource for Power, Telecom and CATV Product Solutions



## Feature: Products of the Year

Product Focus:  
**Test & Measurement**  
**Renewables**  
**AMR/AMI**




**pelco** 25<sup>th</sup>  
 PELCO PRODUCTS, INC.  
 25 Years of Innovation, Quality, Service

**TechAdvantage 2010**  
Atlanta, GA.  
Feb. 10-15

**NETA Power Test**  
Long Beach, CA.  
Feb. 15-18

# Insulator Arm Adaptor Clamp

**P**ower outages or interruptions from dropped lines can be caused by a variety of factors. Damage from storms, ice or high winds can't be avoided, but power companies can limit equipment failures and prevent the huge cost of future drops by eliminating insulator arm damage.

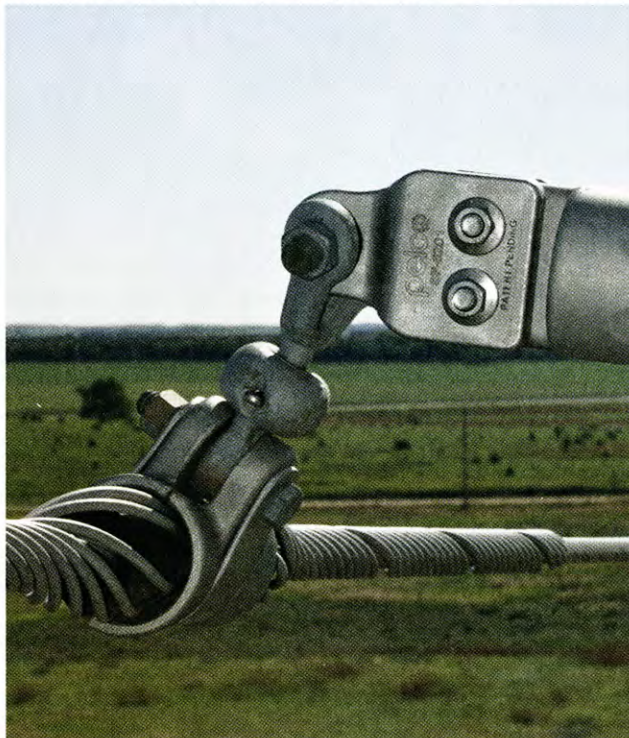
After an insulator arm dropped a transmission line, John Wetig, Line Technician Supervisor and Tom Harbaugh, Line Crew Chief at Sunflower Electric Power Corp. in Great Bend, Kan., knew that they needed more than a repair—they needed a solution to a problem that could happen again and again.

The steel yoke that holds the transmission lines had, over time, damaged the end



of the insulator blade. Movement of the yoke from the Kansas winds and winter ice had caused the steel to eat away at the aluminum. Eventually, the arm suffered enough damage to drop the yoke and the transmission line with it. The high-voltage transmission line dropped onto the distri-

buty insulator arm, an even bigger problem became evident. Sunflower Electric has thousands of this same insulator arm/yoke combinations, all of which have the potential to drop a transmission or distribution line. Economics prohibited replacing the entire unit, so how was the utility going to



*The Insulator Arm Adaptor Clamp eliminates the cost of dropped lines or insulator replacement in the same amount of time it would take to inspect the insulator blade.*

buty line below, taking it down as well.

Dropping both lines caused hundred's of thousand's of dollars in damage to the lines and substations. The entire town of Great Bend was without power for quite a while. The equipment damage, lost revenue and overtime paid to fix the mess was immense.

Upon inspecting the

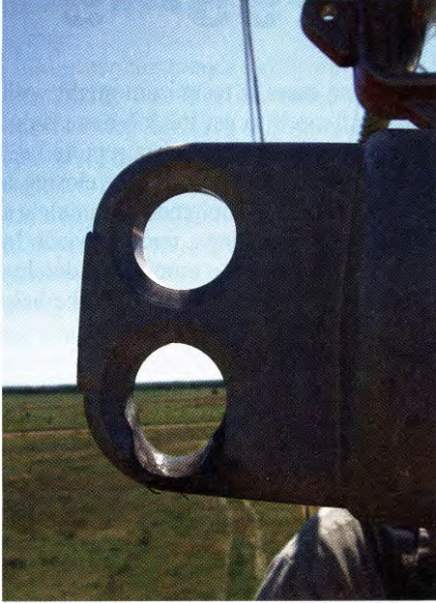
stop steel yokes from damaging aluminum insulator arms?

Sunflower Electric, through its partners at Cleaves-Bessmer-Marietti (CBM) turned to Pelco Products Inc. for a solution. The crew realized that the entire arm was not damaged, just the end. The engineering team at Pelco Products Inc. designed and built the Insulator Arm Adaptor Clamp to strengthen the arm, not replace it. The stainless steel construction is much more resistant to damage, offering a stronger and more secure power line mounting.

Instead of the costly, labor-intensive

process of replacing the entire arm, the crews can simply clamp the stainless steel adaptor over the damaged aluminum blade. The threaded body (with anti-seize lubricant) is secured by two 2-3/4 inch long

bolts, utilizing Belleville washers for a solid mounting system. The entire process takes less than five minutes, and can be done by one person. No special tools are required. Pelco Products has a three-minute,

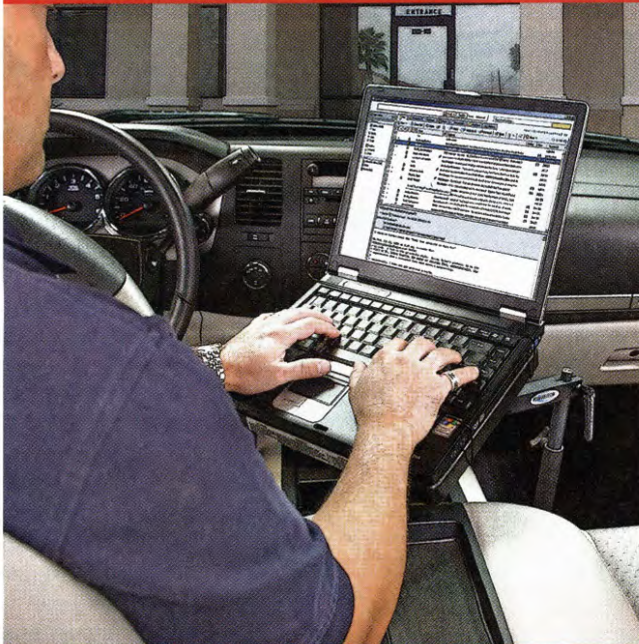


real-time video of the installation process on its Web site ([www.pelcoinc.com](http://www.pelcoinc.com)).

The Insulator Arm Adaptor Clamp avoids line drops and insulator arm replacement in the same amount of time it would take to inspect the insulator blade.

(Continued on page 25)

## VEHICLE LAPTOP MOUNTS



### DISTRACTED DRIVING SOLUTIONS

1.877.455.6886

JOTTO DESK.COM • BLOG.JOTTODESK.COM  
GET SCREENSAFE FOR YOUR FLEET TODAY!



© 2009. JOTTO DESK® is patented product and registered trademark of Assembled Products™ Corporation. JOTTO-CARGO SLIDE™ is patent pending and trademark of Assembled Products™ Corporation.

CIRCLE 15 ON READER SERVICE CARD

## Get A Grip with...



Engage & Disengage Tire Chains from a Dashboard Switch Without Stopping

# ONSPOT

Automatic Tire Chains Since 1977

Traction in forward and reverse for ½ ton to Class 8 vehicles including:

- Utility Trucks • Fire Trucks • Ambulances
- School Buses • Plow Trucks • Tractor Trailers

Approved for Use in States with Chain Control Areas

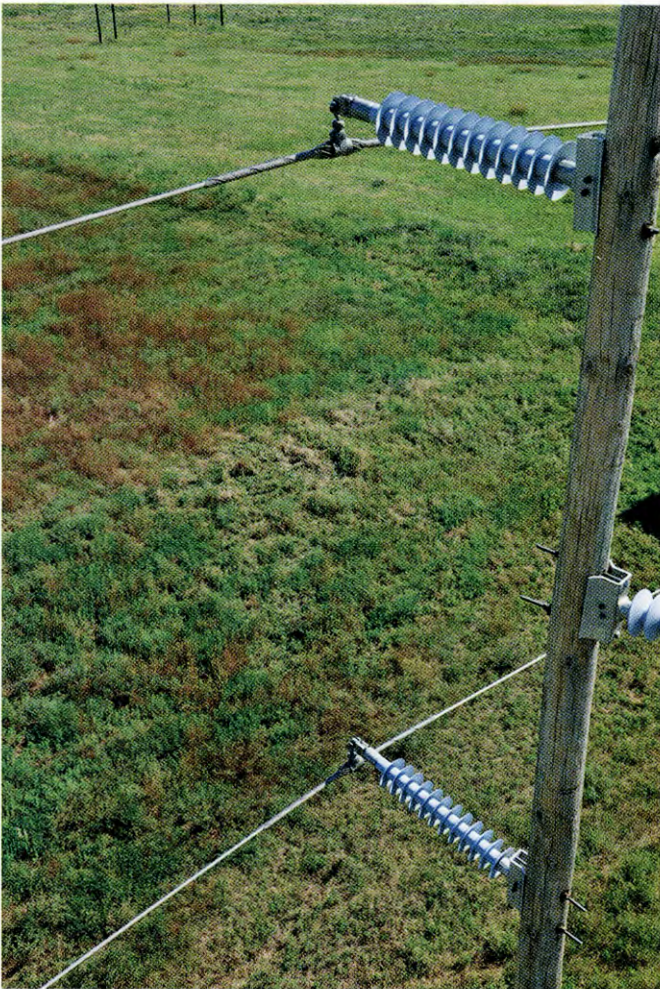
**(800) 766-7768**  
**[www.onspot.com](http://www.onspot.com)**

CIRCLE 16 ON READER SERVICE CARD

go to <http://utilityproducts.hotims.com/> for more information

go to <http://utilityproducts.hotims.com/> for more information

## Insulator Arm... (Continued from page 23)



The damage is easily spotted and installation of the Insulator Arm Adaptor Clamp only takes minutes. A little preventive maintenance goes a long way toward avoiding dropped lines.

A down high-voltage line can create dangerous and damaging situations for people and property. A live line can start fires if it touches a tree branch or hits the ground, causing the electrical current to arc in explosions of sparks. According to the Department of Energy's Office of Electricity Transmission and Distribution, outage cost in residential areas can be costly for households with out-of-pocket costs for consumable goods and food spoilage, plus outages create customer dissatisfaction. A sudden loss of power in commercial or industrial areas can cost thousands of dollars per location involved, causing major losses of revenue and productivity.

The Insulator Arm Adaptor Clamp can save time and money, avoid damage and inconvenience, all while strengthening power line mountings. Line drops cannot be completely eliminated; storms and ice will still cause trouble, but damaged insulator inspection and maintenance can help limit the number of potential drops per year. □

**CIRCLE 102 ON READER SERVICE CARD**

### We Solve Problems

Pelco Products Inc.'s utility line is safety focused, innovative and dependable. Our complete product collection includes Clamps, Mounts, Brackets, Bases and Anchors, Replacement Doors and more. Pelco Products, Inc. develops new products in partnership with utility companies. Our Tech Services team provides in-house design and rapid prototyping for the best in product development.

For 25 years, Pelco Products, Inc. has manufactured quality products for the utility industry. Put our experience and design expertise to work for you. We have what you need.

For more information about this, or any of our innovative utility products, contact our Utility Sales department at (405) 340-3434 or [sales@pelcoinc.com](mailto:sales@pelcoinc.com). See the entire product line at [pelcoinc.com](http://pelcoinc.com).



320 W. 18<sup>th</sup> Street • Edmond, OK 73013  
(405) 340-3434 • (405) 340-3435 Fax  
[pelcoinc.com](http://pelcoinc.com)